

# Battery tightening technology

Shut-Off-Tools

Programmable Shut-Off-Tools

Tools with Torque and Angle Transducer



# HERMES TOOLS

Premium Power Tools



MADE IN GERMANY



**HS-Technik** GmbH  
High - System - Technik

### 8 **TorqBee® Light**

Type designation: TBxL-xx

#### Battery-Shut-Off-Tool

Precision shut-off clutch

- 
- Programmable via USB with HST-Tool-Manager
  - Programmable parameters:
    - Current
    - Angle
    - RPM
    - Time
  - Multi-step programming (6 steps)
  - Handle vibration alarm
  - Multi-colored status LED
  - Intelligent battery management
  - Display of the tightening results
- 

### 12 **TorqBee® SO**

Type designation: TBxSO-xx

#### Battery-Shut-Off-Tool

Precision shut-off clutch

Optional:  
Barcode reader & Wi-Fi

- 
- Programmable via USB with HST-Tool-Manager
  - Programmable parameters:
    - Current
    - Angle
    - RPM
    - Time
  - Multi-step programming (6 steps)
  - Handle vibration alarm
  - Multi-colored status LED
  - Intelligent battery management
  - Display of the tightening results
  - OLED-Display
  - Screw counter
  - Recovery (counter memory function)
  - 100 individual programs
  - Min. 150,000 results incl. tightening curves are saved in the tool
  - Documentation of the date and time of each tightening
- 

### 16 **TorqBee® SOP**

Type designation: TBxSOP-xx

#### Programmable Battery-Shut-Off-DC-Tool

Precision shut-off clutch and torque reaction sensor

Optional:  
Barcode reader & Wi-Fi

- 
- Programmable via USB with HST-Tool-Manager
  - Programmable parameters:
    - Torque
    - Current
    - Angle
    - RPM
    - Time
  - Multi-step programming (6 steps)
  - Handle vibration alarm
  - Multi-colored status LED
  - Intelligent battery management
  - Display of the tightening results
  - OLED-Display
  - Screw counter
  - Recovery (counter memory function)
  - 100 individual programs
  - Min. 150,000 results incl. tightening curves are saved in the tool
  - Redundant system in accordance with VDI/VDE 2862
  - Documentation of the date and time of each tightening
-

### 20 TotiqBee® ECO

Type designation: TBxECO-xx

#### Programmable Battery-DC-Tool

Torque reaction sensor

Optional:

Barcode reader & Wi-Fi

- 
- Programmable via USB with HST-Tool-Manager
  - Programmable parameters:
    - Torque
    - Current
    - Angle
    - RPM
    - Time
  - Multi-step programming (6 steps)
  - Handle vibration alarm
  - Multi-colored status LED
  - Intelligent battery management
  - Display of the tightening results
  - OLED-Display
  - Screw counter
  - Recovery (counter memory function)
  - 100 individual programs
  - Min. 150,000 results incl. tightening curves are saved in the tool
  - Documentation of the date and time of each tightening
- 

### 24 TotiqBee® EC

Type designation: TBxEC-xx

#### Programmable Battery-DC-Tool

Rotating Torque Transducer and Angle Encoder

Optional:

Barcode reader & Wi-Fi

- 
- Programmable via USB with HST-Tool-Manager
  - Programmable parameters:
    - Torque
    - Current
    - Angle
    - RPM
    - Time
  - Multi-step programming (6 steps)
  - Handle vibration alarm
  - Multi-colored status LED
  - Intelligent battery management
  - Display of the tightening results
  - OLED-Display
  - Screw counter
  - Recovery (counter memory function)
  - 100 individual programs
  - Min. 150,000 results incl. tightening curves are saved in the tool
  - The highest sensor precision on the market, torque transducer: < 1 % full scale  
angle resolution: 0.1 °
  - Documentation of the date and time of each tightening
- 

### 28 TotiqBee® EC<sup>2</sup>

Type designation: TBxEC2-xx

#### Programmable Battery-DC-Tool

Rotating Torque Transducer and Angle Encoder

Redundant torque reaction transducer

Optional:

Barcode reader & Wi-Fi

- 
- Programmable via USB with HST-Tool-Manager
  - Programmable parameters:
    - Torque
    - Current
    - Angle
    - RPM
    - Time
  - Multi-step programming (6 steps)
  - Handle vibration alarm
  - Multi-colored status LED
  - Intelligent battery management
  - Display of the tightening results
  - OLED-Display
  - Screw counter
  - Recovery (counter memory function)
  - 100 individual programs
  - Min. 150,000 results incl. tightening curves are saved in the tool
  - The highest sensor precision on the market, torque transducer: < 1 % full scale  
angle resolution: 0.1 °
  - Redundant system in accordance with VDI/VDE 2862
  - Documentation of the date and time of each tightening
-

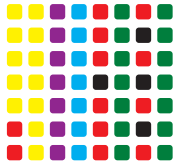
# TotqBee® -Series

## Features



### OLED-Display\*

Visualization of tightening results and tool status.



### Multicolor LED control light

Individually programmable!



### Intelligent battery management

Battery level indicator and effective protection against the Li-Ion battery deep discharging.



### Software HST-Tool-Manager

Intuitive and quick programming of HS-Technik power tools.



### Handle vibration alarm

NOK status



### Job / Sequence\*

Allows for sequences to be processed without additional controller.



### Optional barcode reader integrated into the tool\*

Barcodes with up to 64 characters can be read and processed.



### Optional Wi-Fi for data transmission\*

Connection to HST Controller.



### Recovery (counter memory function)\*

Status memory for the screw counter when changing the battery.

\*Not available in the Light version.

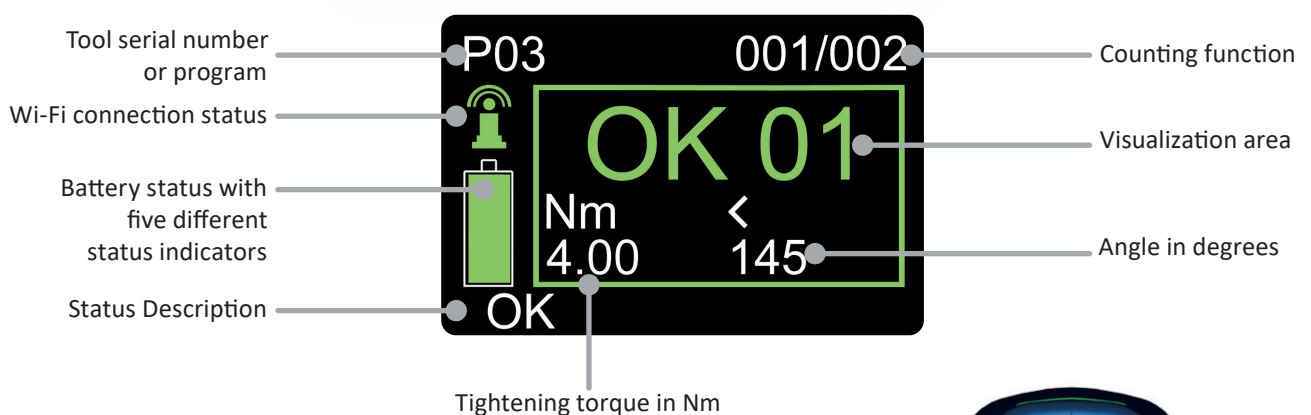


# TorqBee® -Series

## Overview of features

TorqBee® Features	Light	SO	SOP	ECO	EC	EC <sup>2</sup>
Multicolor LED control light	•	•	•	•	•	•
Intelligent battery management	•	•	•	•	•	•
HST-Tool-Manager programming software	•	•	•	•	•	•
Handle vibration alarm	•	•	•	•	•	•
Mechanical shut-off clutch	•	•	•			
OLED-Display		•	•	•	•	•
Counting function for screws		•	•	•	•	•
Job / Sequence		•	•	•	•	•
Optional barcode reader		•	•	•	•	•
Optional Wi-Fi		•	•	•	•	•
Rotating torque transducer and angle encoder					•	•
Torque reaction sensor			•	•		•
Further information	Page 8	Page 12	Page 16	Page 20	Page 24	Page 28

## OLED-Display



The display on the TorqBee® was developed so the operator is intuitively guided through the process steps and can view the quality of the screw connection at any time.



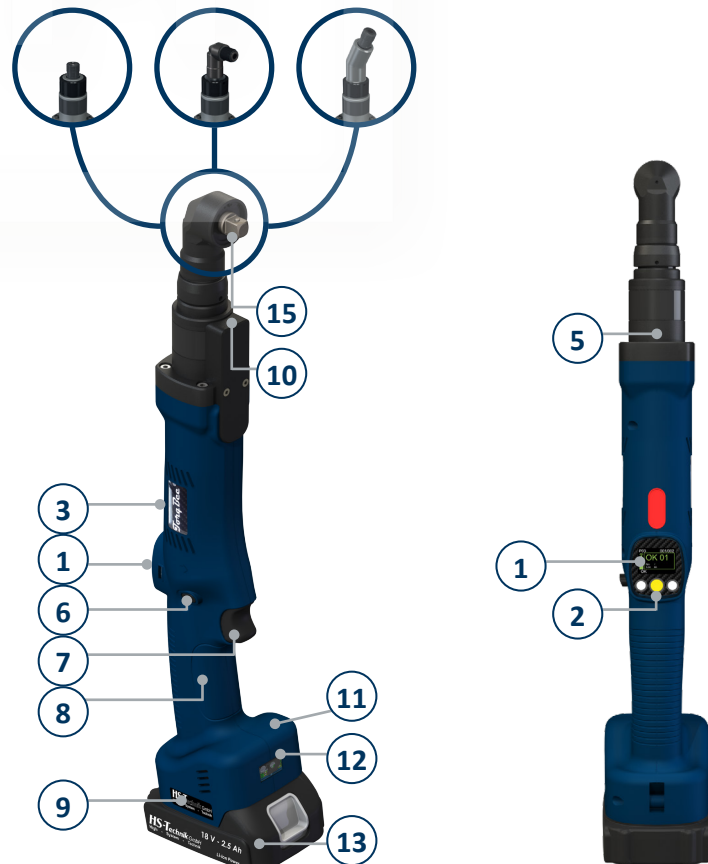
# TotqBee® -Series

## Overview

- 1 OLED-Display to guide operator\***
- 2 Multi-colored LED indicator**  
Tool status information for operator.  
LED visible from all angles.
- 3 Brushless motor**  
for a higher idle speed and faster, powerful working capacity, maintenance-free
- 4 Color index**  
easy machine and area of application torque assignment
- 5 Clutch access\*\***  
The mechanical shut-off clutch can be quickly and easily adjusted
- 6 Clockwise/counterclockwise rotation**  
perfect operation thanks to push trigger
- 7 Start button**  
ergonomic form
- 8 Ergonomic handle**  
to better guide the tool  
incl. handle vibration alarm
- 9 USB port**  
Can be programmed for your specific application
- 10 Powerful LED**  
optimum illumination even in poor lighting conditions
- 11 Optional Wi-Fi\***  
Wi-Fi 2.4 & 5 GHz
- 12 Optional barcode reader\***
- 13 Premium Li-Ion battery**  
18 Volt, 2.5 Ah / 5.0 Ah
- 14 1/4" hex. adapter**
- 15 3/8" square drive tool adapter**  
Output may vary depending on the angle head



### Various angle heads and adapters available!



\* Not available in the Light version.

\*\*Not available in the ECO, EC and EC<sup>2</sup> version.

Screwdriver type	Joint	HST-PR-1825	HST-PR-1850
TBPL/SO/SOP-4	hard	3,600	7,000
	soft	2,500	4,900
TBPL/SO/SOP-12	hard	1,650	3,200
	soft	600	1,100
TBPECO/EC/EC2-12	hard	1,900	3,600
	soft	650	1,200
TBAL/SO/SOP-12	hard	1,750	3,300
	soft	650	1,200
TBAL/SO/SOP-85	hard	*	600
	soft	*	250
TBAECO/EC/EC2-20	hard	950	1,800
	soft	450	850
TBAECO/EC/EC2-85	hard	*	700
	soft	*	300

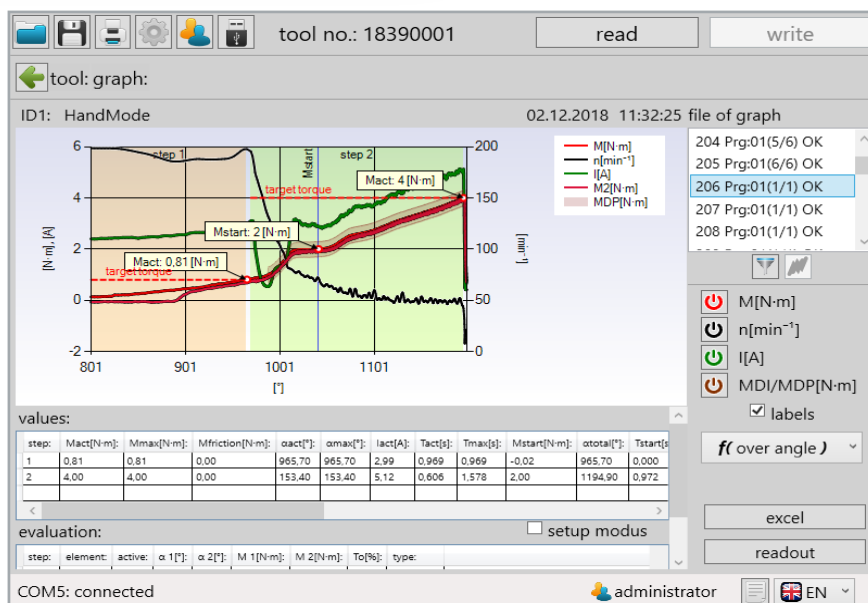
\* Battery not suitable for this tool model.

Note: The information in the table may deviate from the stated values, depending on the screw connection.

## Realistic joint analysis

Tools from the SOP-, EC- and EC<sup>2</sup>-series tools are excellent for Joint analysis.

The torque/angle curve is recorded directly in the tool, without additional hardware and can be exported to Microsoft® Excel for additional analysis and reports.



# TorqBee® Light-Series

## Shut-Off-Clutch-Tool

- Precision shut-off clutch
- Torque accuracy
  - ≤ +/- 5 %
- 6-step programmability
  - Current
  - Angle
  - RPM
  - Time
- Handle vibration alarm
- Multi-colored LED indicator, visible from all angles
- Intelligent battery management
- Brushless high-power motor
- Recuperation extends the battery life
- Brake energy recovery extends the battery life
- Maximum ergonomics
- LED to illuminate the tightening area
- Updates can be installed via USB

For further information on the programming software, please visit our website.



### TorqBee® Light

- The low-cost version with programming option
- Suitable for class C joints
- 6-step programmability

# TotqBee® Light-Series

## Pistol Tool



Pistol Tool	Torque	Speed (neutral)	Tool adapter	Dimensions L x W x H	Weight
TBPL-4	1.0 - 4.0 Nm (8.85 - 35.40 lbf in)	60 - 1,300 rpm	1/4" - Form E	230 x 72 x 211 mm (9.06 x 2.83 x 8.30 in)	1.20 kg (2.65 lbs)
TBPL-6	2.0 - 6.5 Nm (17.70 - 57.53 lbf in)	50 - 1,040 rpm	1/4" - Form E	230 x 72 x 211 mm (9.06 x 2.83 x 8.30 in)	1.20 kg (2.65 lbs)
TBPL-10	2.0 - 9.0 Nm (17.70 - 79.66 lbf in)	40 - 740 rpm	1/4" - Form E	230 x 72 x 211 mm (9.06 x 2.83 x 8.30 in)	1.20 kg (2.65 lbs)
TBPL-12	3.0 - 13.0 Nm (26.55 - 115.06 lbf in)	30 - 530 rpm	1/4" - Form E	230 x 72 x 211 mm (9.06 x 2.83 x 8.30 in)	1.20 kg (2.65 lbs)
TBPL-xxLSP3 <sup>1)</sup>	upon request	upon request	upon request	230 x 72 x 211 mm (9.06 x 2.83 x 8.30 in)	1.20 kg (2.65 lbs)
TBAL-xxRA <sup>2)</sup>	upon request	upon request	upon request	230 x 72 x 211 mm (9.06 x 2.83 x 8.30 in)	1.20 kg (2.65 lbs)

<sup>1)</sup> Pistol tool with Lubbering LSP3 interface

<sup>2)</sup> Pistol tool with adapter for torque reaction arm

# TorqBee® Light-Series

## Angle Tool



Angle Tool	Torque	Speed (neutral)	Tool adapter	Dimensions L x W x H	Weight
<b>TBAL-10-2 (4)</b>	2.0 - 9.0 Nm (17.70 - 79.66 lbf in)	40 - 700 rpm	1/4" square	460 x 72 x 94 mm (18.11 x 2.83 x 3.70 in)	1.50 kg (3.31 lbs)
<b>TBAL-12-3</b>	3.0 - 13.0 Nm (26.55 - 115.06 lbf in)	30 - 480 rpm	3/8" square	452 x 72 x 94 mm (17.80 x 2.83 x 3.70 in)	1.50 kg (3.31 lbs)
<b>TBAL-20-3</b>	5.0 - 20.0 Nm (44.25 - 177.01 lbf in)	20 - 340 rpm	3/8" square	452 x 72 x 94 mm (17.80 x 2.83 x 3.70 in)	1.50 kg (3.31 lbs)
<b>TBAL-30-3</b>	15.0 - 30.0 Nm (132.76 - 265.52 lbf in)	10 - 200 rpm	3/8" square	510 x 72 x 94 mm (20.08 x 2.83 x 3.70 in)	2.20 kg (4.85 lbs)
<b>TBAL-55-3 (5)</b>	25.0 - 55.0 Nm (221.27 - 486.79 lbf in)	10 - 120 rpm	3/8" square	580 x 72 x 94 mm (22.83 x 2.83 x 3.70 in)	2.67 kg (5.89 lbs)
<b>TBAL-85-5</b>	30.0 - 85.0 Nm (265.52 - 752.31 lbf in)	10 - 80 rpm	1/2" square	630 x 72 x 94 mm (24.80 x 2.83 x 3.70 in)	3.00 kg (6.61 lbs)
<b>TBAL-100-5</b>	35.0 - 100.0 Nm (309.78 - 885.08 lbf in)	6 - 70 rpm	1/2" square	642 x 72 x 94 mm (25.28 x 2.83 x 3.70 in)	3.67 kg (8.09 lbs)

2 = 1/4" square  
 3 = 3/8" square  
 4 = 1/4" hex E  
 5 = 1/2" square

Above 60 Nm, the tool must be operated with a suitable torque reaction arm!  
 Safety feature: From TBAL-30 second start trigger available.

Dimensions and weight indications without battery.

Angle heads for the TorqBee® series  
 can be found starting on page 32.



# TotqBee® Light-Series

## Straight Tool



Straight Tool	Torque	Speed (neutral)	Tool adapter	Dimensions L x W x H	Weight
TBSL-4	1.0 - 4.0 Nm (8.85 - 35.40 lbf in)	60 - 1,300 rpm	1/4" - Form E	410 x 72 x 94 mm (16.14 x 2.83 x 3.70 in)	1.30 kg (2.87 lbs)
TBSL-6	2.0 - 6.5 Nm (17.70 - 57.53 lbf in)	50 - 1,040 rpm	1/4" - Form E	410 x 72 x 94 mm (16.14 x 2.83 x 3.70 in)	1.30 kg (2.87 lbs)
TBSL-10	2.0 - 9.0 Nm (17.70 - 79.66 lbf in)	40 - 740 rpm	1/4" - Form E	410 x 72 x 94 mm (16.14 x 2.83 x 3.70 in)	1.30 kg (2.87 lbs)
TBSL-12	3.0 - 13.0 Nm (26.55 - 115.06 lbf in)	30 - 530 rpm	1/4" - Form E	410 x 72 x 94 mm (16.14 x 2.83 x 3.70 in)	1.30 kg (2.87 lbs)

Dimensions and weight indications without battery.

# TorqBee® SO-Series

## Programmable Shut-Off-Clutch-Tool

- **Precision shut-off clutch**
- **Torque accuracy**  
≤ +/- 5 %
- **6-step programmability**
  - Current
  - Angle
  - RPM
  - Time
- **Handle vibration alarm**
- **Multi-colored LED indicator, visible from all angles**
- **Intelligent battery management**
- **Brushless high-power motor**
- **Display of the tightening results**
- **Recuperation extends the battery life**
- **Maximum ergonomics**
- **LED to illuminate the tightening area**
- **Updates can be installed via USB**
- **OLED-Display**
- **Screw counter**
- **Counter memory function**
- **100 individual programs**
- **Min. 150,000 tightening results with current / angle are stored in the tool**
- **Optional: Barcode reader and Wi-Fi**

For further information on the programming software, please visit our website.



### TorqBee® SO – Benefits in comparison to the tool on the previous pages

- OLED-Display for operator information
- Screw counter function
- Optional Wi-Fi (2.4 & 5 GHz) and barcode reader



# TotqBee® SO-Series

## Pistol Tool



Pistol Tool	Torque	Speed (neutral)	Tool adapter	Dimensions L x W x H	Weight
TBPSO-4*	1.0 - 4.0 Nm (8.85 - 35.40 lbf in)	60 - 1,300 rpm	1/4" - Form E	230 x 72 x 211 mm (9.06 x 2.83 x 8.30 in)	1.20 kg (2.65 lbs)
TBPSO-6*	2.0 - 6.5 Nm (17.70 - 57.53 lbf in)	50 - 1,040 rpm	1/4" - Form E	230 x 72 x 211 mm (9.06 x 2.83 x 8.30 in)	1.20 kg (2.65 lbs)
TBPSO-10*	2.0 - 9.0 Nm (17.70 - 79.66 lbf in)	40 - 740 rpm	1/4" - Form E	230 x 72 x 211 mm (9.06 x 2.83 x 8.30 in)	1.20 kg (2.65 lbs)
TBPSO-12*	3.0 - 13.0 Nm (26.55 - 115.06 lbf in)	30 - 530 rpm	1/4" - Form E	230 x 72 x 211 mm (9.06 x 2.83 x 8.30 in)	1.20 kg (2.65 lbs)
TBPSO-xxLSP3 <sup>1)</sup>	upon request	upon request	upon request	230 x 72 x 211 mm (9.06 x 2.83 x 8.30 in)	1.20 kg (2.65 lbs)
TBPSO-xxRA* <sup>2)</sup>	upon request	upon request	upon request	230 x 72 x 211 mm (9.06 x 2.83 x 8.30 in)	1.20 kg (2.65 lbs)

\*W = Wi-Fi option

\*B = Barcode reader option

\*WB = Wi-Fi & barcode reader option

<sup>1)</sup> Pistol tool with Lubbering LSP3 interface

<sup>2)</sup> Pistol tool with adapter for torque reaction arm

Dimensions and weight indications without battery.

# TorqBee® SO-Series

## Angle Tool



Angle Tool	Torque	Speed (neutral)	Tool adapter	Dimensions L x W x H	Weight
<b>TBASO-10*-2 (4)</b>	2.0 - 9.0 Nm (17.70 - 79.66 lbf in)	40 - 700 rpm	1/4" square	460 x 72 x 94 mm (18.11 x 2.83 x 3.70 in)	1.50 kg (3.31 lbs)
<b>TBASO-12*-3</b>	3.0 - 13.0 Nm (26.55 - 115.06 lbf in)	30 - 480 rpm	3/8" square	452 x 72 x 94 mm (17.80 x 2.83 x 3.70 in)	1.50 kg (3.31 lbs)
<b>TBASO-20*-3</b>	5.0 - 20.0 Nm (44.25 - 177.01 lbf in)	20 - 340 rpm	3/8" square	452 x 72 x 94 mm (17.80 x 2.83 x 3.70 in)	1.50 kg (3.31 lbs)
<b>TBASO-30*-3</b>	15.0 - 30.0 Nm (132.76 - 265.52 lbf in)	10 - 200 rpm	3/8" square	510 x 72 x 94 mm (20.08 x 2.83 x 3.70 in)	2.20 kg (4.85 lbs)
<b>TBASO-55*-3 (5)</b>	25.0 - 55.0 Nm (221.27 - 486.79 lbf in)	10 - 120 rpm	3/8" square	580 x 72 x 94 mm (22.83 x 2.83 x 3.70 in)	2.67 kg (5.89 lbs)
<b>TBASO-85*-5</b>	30.0 - 85.0 Nm (265.52 - 752.31 lbf in)	10 - 80 rpm	1/2" square	630 x 72 x 94 mm (24.80 x 2.83 x 3.70 in)	3.00 kg (6.61 lbs)
<b>TBASO*-100-5</b>	35.0 - 100.0 Nm (309.78 - 885.08 lbf in)	6 - 70 rpm	1/2" square	642 x 72 x 94 mm (25.28 x 2.83 x 3.70 in)	3.67 kg (8.09 lbs)

\*W = Wi-Fi option

\*B = Barcode reader option

\*WB = Wi-Fi & barcode reader option

2 = 1/4" square

3 = 3/8" square

4 = 1/4" hex E

5 = 1/2" square

Above 60 Nm, the tool must be operated with a suitable torque reaction arm!  
Safety feature: From TBAX-30 second start trigger available.

Dimensions and weight indications without battery.

Angle heads for the TorqBee® series  
can be found starting on page 32.



# TotqBee® SO-Series

## Straight Tool



Straight Tool	Torque	Speed (neutral)	Tool adapter	Dimensions L × W × H	Weight
<b>TBSSO-4*</b>	1.0 - 4.0 Nm (8.85 - 35.40 lbf in)	60 - 1,300 rpm	1/4" - Form E	410 × 72 × 94 mm (16.14 × 2.83 × 3.70 in)	1.30 kg (2.87 lbs)
<b>TBSSO-6*</b>	2.0 - 6.5 Nm (17.70 - 57.53 lbf in)	50 - 1,040 rpm	1/4" - Form E	410 × 72 × 94 mm (16.14 × 2.83 × 3.70 in)	1.30 kg (2.87 lbs)
<b>TBSSO-10*</b>	2.0 - 9.0 Nm (17.70 - 79.66 lbf in)	40 - 740 rpm	1/4" - Form E	410 × 72 × 94 mm (16.14 × 2.83 × 3.70 in)	1.30 kg (2.87 lbs)
<b>TBSSO-12*</b>	3.0 - 13.0 Nm (26.55 - 115.06 lbf in)	30 - 530 rpm	1/4" - Form E	410 × 72 × 94 mm (16.14 × 2.83 × 3.70 in)	1.30 kg (2.87 lbs)

\*W = Wi-Fi option

\*B = Barcode reader option

\*WB = Wi-Fi & barcode reader option

Dimensions and weight indications without battery.

# TorqBee® SOP-Series

## Programmable Shut-Off-Clutch-Tool with Torque Reaction Sensor

- Precision shut-off clutch
- Torque reaction sensor
- Torque accuracy
  - ≤ +/- 5 %
- 6-step programmability
  - Torque
  - Current
  - Angle
  - RPM
  - Time
- Handle vibration alarm
- Multi-colored LED indicator, visible from all angles
- Intelligent battery management
- Brushless high-power motor
- Display of the tightening results
- Recuperation extends the battery life
- Maximum ergonomics
- LED to illuminate the tightening area
- Updates can be installed via USB
- OLED-Display
- Screw counter
- Counter memory function
- 100 individual programs
- Min. 150,000 tightening results incl. torque and angle curve are stored in the tool
- OK / NOK evaluation of the shut-off result, direct check of the mechanical shut-off clutch
- Can also be used as Battery-DC-Tool
- Optional: Barcode reader and Wi-Fi

For further information on the programming software, please visit our website.



### TorqBee® SOP – Benefits in comparison to the tool on the previous pages

- Torque reaction sensor OK/NOK evaluation of the shut-off result
- Can also be used as Battery-DC-Tool
- Suitable for class A, B & C joints

# TorqBee® SOP-Series

## Pistol Tool



Pistol Tool	Torque	Speed (neutral)	Tool adapter	Dimensions L x W x H	Weight
TBPSOP-4*	1.0 - 4.0 Nm (8.85 - 35.40 lbf in)	60 - 1,300 rpm	1/4" - Form E	230 x 72 x 211 mm (9.06 x 2.83 x 8.30 in)	1.20 kg (2.65 lbs)
TBPSOP-6*	2.0 - 6.5 Nm (17.70 - 57.53 lbf in)	50 - 1,040 rpm	1/4" - Form E	230 x 72 x 211 mm (9.06 x 2.83 x 8.30 in)	1.20 kg (2.65 lbs)
TBPSOP-10*	2.0 - 9.0 Nm (17.70 - 79.66 lbf in)	40 - 740 rpm	1/4" - Form E	230 x 72 x 211 mm (9.06 x 2.83 x 8.30 in)	1.20 kg (2.65 lbs)
TBPSOP-12*	3.0 - 13.0 Nm (26.55 - 115.06 lbf in)	30 - 530 rpm	1/4" - Form E	230 x 72 x 211 mm (9.06 x 2.83 x 8.30 in)	1.20 kg (2.65 lbs)
TBPSOP-xxLSP3 <sup>1)</sup>	upon request	upon request	upon request	230 x 72 x 211 mm (9.06 x 2.83 x 8.30 in)	1.20 kg (2.65 lbs)
TBPSOP-xxRA* <sup>2)</sup>	upon request	upon request	upon request	230 x 72 x 211 mm (9.06 x 2.83 x 8.30 in)	1.20 kg (2.65 lbs)

\*W = Wi-Fi option

\*B = Barcode reader option

\*WB = Wi-Fi & barcode reader option

<sup>1)</sup> Pistol tool with Lübberring LSP3 interface

<sup>2)</sup> Pistol tool with adapter for torque reaction arm

Dimensions and weight indications without battery.

# TorqBee® SOP-Series

## Angle Tool



Angle Tool	Torque	Speed (neutral)	Tool adapter	Dimensions L x W x H	Weight
<b>TBASOP-10*-2 (4)</b>	2.0 - 9.0 Nm (17.70 - 79.66 lbf in)	40 - 740 rpm	1/4" square	460 x 72 x 94 mm (18.11 x 2.83 x 3.70 in)	1.50 kg (3.31 lbs)
<b>TBASOP-12*-3</b>	3.0 - 13.0 Nm (26.55 - 115.06 lbf in)	30 - 480 rpm	3/8" square	452 x 72 x 94 mm (17.80 x 2.83 x 3.70 in)	1.50 kg (3.31 lbs)
<b>TBASOP-20*-3</b>	5.0 - 20.0 Nm (44.25 - 177.01 lbf in)	20 - 340 rpm	3/8" square	452 x 72 x 94 mm (17.80 x 2.83 x 3.70 in)	1.50 kg (3.31 lbs)
<b>TBASOP-30*-3</b>	15.0 - 30.0 Nm (132.76 - 265.52 lbf in)	10 - 200 rpm	3/8" square	510 x 72 x 94 mm (20.08 x 2.83 x 3.70 in)	2.20 kg (4.85 lbs)
<b>TBASOP-55*-3 (5)</b>	25.0 - 55.0 Nm (221.27 - 486.79 lbf in)	10 - 120 rpm	3/8" square	580 x 72 x 94 mm (22.83 x 2.83 x 3.70 in)	2.67 kg (5.89 lbs)
<b>TBASOP-85*-5</b>	30.0 - 85.0 Nm (265.52 - 752.31 lbf in)	10 - 80 rpm	1/2" square	630 x 72 x 94 mm (24.80 x 2.83 x 3.70 in)	3.00 kg (6.61 lbs)
<b>TBASOP*-100-5</b>	35.0 - 100.0 Nm (309.78 - 885.08 lbf in)	6 - 70 rpm	1/2" square	642 x 72 x 94 mm (25.28 x 2.83 x 3.70 in)	3.67 kg (8.09 lbs)

\*W = Wi-Fi option

\*B = Barcode reader option

\*WB = Wi-Fi & barcode reader option

2 = 1/4" square

3 = 3/8" square

4 = 1/4" hex E

5 = 1/2" square

Above 60 Nm, the tool must be operated with a suitable torque reaction arm!  
Safety feature: From TBAX-30 second start trigger available.

Dimensions and weight indications without battery.

Angle heads for the TorqBee® series  
can be found starting on page 32.



# TotqBee® SOP-Series

## Straight Tool



Straight Tool	Torque	Speed (neutral)	Tool adapter	Dimensions L x W x H	Weight
<b>TBSSOP-4*</b>	1.0 - 4.0 Nm (8.85 - 35.40 lbf in)	60 - 1,300 rpm	1/4" - Form E	410 x 72 x 94 mm (16.14 x 2.83 x 3.70 in)	1.30 kg (2.87 lbs)
<b>TBSSOP-6*</b>	2.0 - 6.5 Nm (17.70 - 57.53 lbf in)	50 - 1,040 rpm	1/4" - Form E	410 x 72 x 94 mm (16.14 x 2.83 x 3.70 in)	1.30 kg (2.87 lbs)
<b>TBSSOP-10*</b>	2.0 - 9.0 Nm (17.70 - 79.66 lbf in)	40 - 740 rpm	1/4" - Form E	410 x 72 x 94 mm (16.14 x 2.83 x 3.70 in)	1.30 kg (2.87 lbs)
<b>TBSSOP-12*</b>	3.0 - 13.0 Nm (26.55 - 115.06 lbf in)	30 - 530 rpm	1/4" - Form E	410 x 72 x 94 mm (16.14 x 2.83 x 3.70 in)	1.30 kg (2.87 lbs)

\*W = Wi-Fi option

\*B = Barcode reader option

\*WB = Wi-Fi & barcode reader option



# TorqBee® ECO-Series

## Programmable ECO-EC-Tool

- **Torque transducer**
- **Torque accuracy**  
≤ +/- 4 %
- **6-step programmability**
  - Torque
  - Current
  - Angle
  - RPM
  - Time
- **Handle vibration alarm**
- **Multi-colored LED indicator, visible from all angles**
- **Intelligent battery management**
- **Brushless high-power motor**
- **Display of the tightening results**
- **Recuperation extends the battery life**
- **Maximum ergonomics**
- **LED to illuminate the tightening area**
- **Updates can be installed via USB**
- **OLED-Display**
- **Screw counter**
- **Counter memory function**
- **100 individual programs**
- **Min. 150,000 tightening results incl. torque and angle curve are stored in the tool**
- **OK / NOK evaluation of the shut-off result**
- **All common tightening strategies can be programmed**
- **Optional: Barcode reader and Wi-Fi**

For further information on the programming software, please visit our website.



### TorqBee® ECO – Benefits in comparison to the tool on the previous pages

- Torque transducer for the highest level of precision
- Suitable for class A, B & C joints



# TorqBee® ECO-Series

## Pistol Tool



Pistol Tool	Torque	Speed (neutral)	Tool adapter	Dimensions L x W x H	Weight
TBPECO-12*	2.0 - 14.0 Nm (17.70 - 123.91 lbf in)	20 - 530 rpm	1/4" - Form E	230 x 72 x 211 mm (9.06 x 2.83 x 8.30 in)	1.15 kg (2.54 lbs)
TBPECO-xxLSP3	upon request	upon request	upon request	230 x 72 x 211 mm (9.06 x 2.83 x 8.30 in)	1.15 kg (2.54 lbs)
TBPECO-xxRA* 1)	upon request	upon request	upon request	230 x 72 x 211 mm (9.06 x 2.83 x 8.30 in)	1.15 kg (2.54 lbs)

\*W = Wi-Fi option

\*B = Barcode reader option

\*WB = Wi-Fi & barcode reader option

<sup>1)</sup> Pistol tool with Lübberring LSP3 interface

<sup>2)</sup> Pistol tool with adapter for torque reaction arm

# TorqBee® ECO-Series

## Angle Tool



Angle Tool	Torque	Speed (neutral)	Tool adapter	Dimensions L x W x H	Weight
TBAECO-12*-3	5.0 - 12.0 Nm (44.25 - 106.21 lbf in)	20 - 480 rpm	3/8" square	463 x 72 x 94 mm (18.23 x 2.83 x 3.70 in)	1.45 kg (3.20 lbs)
TBAECO-20*-3	5.0 - 20.0 Nm (44.25 - 177.01 lbf in)	15 - 340 rpm	3/8" square	452 x 72 x 94 mm (17.80 x 2.83 x 3.70 in)	1.45 kg (3.20 lbs)
TBAECO-30*-3	10.0 - 30.0 Nm (88.51 - 265.52 lbf in)	10 - 200 rpm	3/8" square	530 x 72 x 94 mm (20.87 x 2.83 x 3.70 in)	2.25 kg (4.96 lbs)
TBAECO-55*-3 (5)	20.0 - 55.0 Nm (177.01 - 486.79 lbf in)	5 - 120 rpm	3/8" square	586 x 72 x 94 mm (23.07 x 2.83 x 3.70 in)	2.67 kg (5.89 lbs)
TBAECO-85*-5	30.0 - 85.0 Nm (265.52 - 752.31 lbf in)	4 - 80 rpm	1/2" square	630 x 72 x 94 mm (24.80 x 2.83 x 3.70 in)	3.00 kg (6.61 lbs)
TBAECO*-120-5	35.0 - 120.0 Nm (309.77 - 1062.09 lbf in)	3 - 70 rpm	1/2" square	647 x 72 x 94 mm (25.47 x 2.83 x 3.70 in)	3.40 kg (7.50 lbs)

\*W = Wi-Fi option

\*B = Barcode reader option

\*WB = Wi-Fi & barcode reader option

3 = 3/8" square

5 = 1/2" square

Above 60 Nm, the tool must be operated with a suitable torque reaction arm!  
Safety feature: From TBAx-30 second start trigger available.

Dimensions and weight indications without battery.

Angle heads for the TorqBee® series  
can be found starting on page 32.



# TotqBee® ECO-Series

## Straight Tool



Straight Tool	Torque	Speed (neutral)	Tool adapter	Dimensions L x W x H	Weight
<b>TBSECO-12*</b>	2.0 - 14.0 Nm (17.70 - 123.91 lbf in)	20 - 530 rpm	1/4" - Form E	410 x 72 x 94 mm (16.14 x 2.83 x 3.70 in)	1.22 kg (2.69 lbs)

\*W = Wi-Fi option

\*B = Barcode reader option

\*WB = Wi-Fi & barcode reader option

Dimensions and weight indications without battery.

# TorqBee® EC-Series

## Programmable DC-Tool with Torque Transducer and Angle Encoder

- Rotating torque transducer and angle encoder
- Torque accuracy
  - ≤ +/- 2,5 %
- 6-step programmability
  - Torque
  - Current
  - Angle
  - RPM
  - Time
- Handle vibration alarm
- Multi-colored LED indicator, visible from all angles
- Intelligent battery management
- Brushless high-power motor
- Display of the tightening results
- Recuperation extends the battery life
- Maximum ergonomics
- LED to illuminate the tightening area
- Updates can be installed via USB
- OLED-Display
- Screw counter
- Counter memory function
- 100 individual programs
- Min. 150,000 tightening results incl. torque and angle curve are stored in the tool
- OK / NOK evaluation of the shut-off result
- All common tightening strategies can be programmed
- Optional: Barcode reader and Wi-Fi

For further information on the programming software, please visit our website.



### TorqBee® EC – Benefits in comparison to the tool on the previous pages

- Rotating torque transducer and angle encoder for the highest level of precision
- Highest level of precision even when running counterclockwise
- Suitable for class A, B & C joints

# TorqBee® EC-Series

## Pistol Tool



Pistol Tool	Torque	Speed (neutral)	Tool adapter	Dimensions L × W × H	Weight
TBPEC-10*	0.8 - 11.0 Nm (7.08 - 97.36 lbf in)	20 - 740 rpm	1/4" - Form E	230 × 72 × 211 mm (9.06 × 2.83 × 8.30 in)	1.15 kg (2.54 lbs)
TBPEC-12*	1.0 - 14.0 Nm (8.85 - 123.91 lbf in)	20 - 530 rpm	1/4" - Form E	230 × 72 × 211 mm (9.06 × 2.83 × 8.30 in)	1.15 kg (2.54 lbs)
TBPEC-xxLSP3 <sup>1)</sup>	upon request	upon request	upon request	230 × 72 × 211 mm (9.06 × 2.83 × 8.30 in)	1.15 kg (2.54 lbs)
TBPEC-xxRA* <sup>2)</sup>	upon request	upon request	upon request	230 × 72 × 211 mm (9.06 × 2.83 × 8.30 in)	1.15 kg (2.54 lbs)

\*W = Wi-Fi option

\*B = Barcode reader option

\*WB = Wi-Fi & barcode reader option

<sup>1)</sup> Pistol tool with Lubbering LSP3 interface

<sup>2)</sup> Pistol tool with adapter for torque reaction arm

Dimensions and weight indications without battery.

# TorqBee® EC-Series

## Angle Tool



Angle Tool	Torque	Speed (neutral)	Tool adapter	Dimensions L x W x H	Weight
<b>TBAEC-10*-2 (4)</b>	1.5 - 10.0 Nm (13.28 - 88.51 lbf in)	20 - 700 rpm	1/4" square	487 x 72 x 94 mm (19.17 x 2.83 x 3.70 in)	1.43 kg (3.15 lbs)
<b>TBAEC-12*-3</b>	2.0 - 12.0 Nm (17.70 - 106.21 lbf in)	20 - 520 rpm	3/8" square	463 x 72 x 94 mm (18.23 x 2.83 x 3.70 in)	1.45 kg (3.20 lbs)
<b>TBAEC-20*-3</b>	5.0 - 20.0 Nm (44.25 - 177.01 lbf in)	16 - 370 rpm	3/8" square	452 x 72 x 94 mm (17.80 x 2.83 x 3.70 in)	1.45 kg (3.20 lbs)
<b>TBAEC-30*-3</b>	10.0 - 30.0 Nm (88.51 - 265.52 lbf in)	10 - 240 rpm	3/8" square	530 x 72 x 94 mm (20.87 x 2.83 x 3.70 in)	2.25 kg (4.96 lbs)
<b>TBAEC-55*-3 (5)</b>	20.0 - 55.0 Nm (177.01 - 486.79 lbf in)	6 - 130 rpm	3/8" square	586 x 72 x 94 mm (23.07 x 2.83 x 3.70 in)	2.67 kg (5.89 lbs)
<b>TBAEC-85*-5</b>	30.0 - 85.0 Nm (265.52 - 752.31 lbf in)	3 - 80 rpm	1/2" square	630 x 72 x 94 mm (24.80 x 2.83 x 3.70 in)	3.00 kg (6.61 lbs)
<b>TBAEC*-120-5</b>	35.0 - 120.0 Nm (309.78 - 1062.09 lbf in)	2 - 60 rpm	1/2" square	647 x 72 x 94 mm (25.47 x 2.83 x 3.70 in)	3.40 kg (7.50 lbs)

\*W = Wi-Fi option

\*B = Barcode reader option

\*WB = Wi-Fi & barcode reader option

2 = 1/4" square

3 = 3/8" square

4 = 1/4" hex E

5 = 1/2" square

Above 60 Nm, the tool must be operated with a suitable torque reaction arm!  
Safety feature: From TBAx-30 second start trigger available.

Dimensions and weight indications without battery.

Angle heads for the TorqBee® series  
can be found starting on page 32.



# TotqBee® EC-Series

## Straight Tool



Straight Tool	Torque	Speed (neutral)	Tool adapter	Dimensions L x W x H	Weight
<b>TBSEC-10*</b>	0.8 - 11.0 Nm (7.08 - 97.36 lbf in)	20 - 740 rpm	1/4" - Form E	410 x 72 x 94 mm (16.14 x 2.83 x 3.70 in)	1.22 kg (2.69 lbs)
<b>TBSEC-12*</b>	1.0 - 14.0 Nm (8.85 - 123.91 lbf in)	20 - 530 rpm	1/4" - Form E	410 x 72 x 94 mm (16.14 x 2.83 x 3.70 in)	1.22 kg (2.69 lbs)

\*W = Wi-Fi option

\*B = Barcode reader option

\*WB = Wi-Fi & barcode reader option

# TorqBee® EC<sup>2</sup>-Series

Programmable DC-Tool with Action and Reaction Transducer (Redundancy)

- Rotating torque transducer and angle encoder + redundant torque reaction sensor
- Torque accuracy  
≤ +/- 2,5 %
- 6-step programmability
  - Torque
  - Current
  - Angle
  - RPM
  - Time
- Handle vibration alarm
- Multi-colored LED indicator, visible from all angles
- Intelligent battery management
- Brushless high-power motor
- Display of the tightening results
- Recuperation extends the battery life
- Maximum ergonomics
- LED to illuminate the tightening area
- Updates can be installed via USB
- OLED-Display
- Screw counter
- Counter memory function
- 100 individual programs
- Min. 150,000 tightening results incl. torque and angle curve are stored in the tool
- OK / NOK evaluation of the shut-off result
- All common tightening strategies can be programmed
- Torque reaction sensor as a redundancy VDI / VDE 2862
- Optional: Barcode reader and Wi-Fi

For further information on the programming software, please visit our website.



## TorqBee® EC<sup>2</sup> – Benefits in comparison to the tool on the previous pages

- Torque reaction sensor as a redundancy for rotating torque transducer
- Angle of the brushless motor as a redundancy for the angle encoder
- Suitable for class A, B & C joints and hand-guided systems (in accordance with VDI 2862)





# TorqBee® EC<sup>2</sup>-Series

## Pistol Tool



Pistol Tool	Torque	Speed (neutral)	Tool adapter	Dimensions L × W × H	Weight
TBPEC2-10*	0.8 - 11.0 Nm (7.08 - 97.36 lbf in)	20 - 740 rpm	1/4" - Form E	230 × 72 × 211 mm (9.06 × 2.83 × 8.30 in)	1.15 kg (2.54 lbs)
TBPEC2-12*	1.0 - 14.0 Nm (8.85 - 123.91 lbf in)	20 - 530 rpm	1/4" - Form E	230 × 72 × 211 mm (9.06 × 2.83 × 8.30 in)	1.15 kg (2.54 lbs)
TBPEC2-xxLSP3 <sup>1)</sup>	upon request	upon request	upon request	230 × 72 × 211 mm (9.06 × 2.83 × 8.30 in)	1.15 kg (2.54 lbs)
TBPEC2-xxRA* <sup>2)</sup>	upon request	upon request	upon request	230 × 72 × 211 mm (9.06 × 2.83 × 8.30 in)	1.15 kg (2.54 lbs)

\*W = Wi-Fi option

\*B = Barcode reader option

\*WB = Wi-Fi & barcode reader option

<sup>1)</sup> Pistol tool with Lubbering LSP3 interface

<sup>2)</sup> Pistol tool with adapter for torque reaction arm

Dimensions and weight indications without battery.

# TorqBee® EC<sup>2</sup>-Series

## Angle Tool



Angle Tool	Torque	Speed (neutral)	Tool adapter	Dimensions L x W x H	Weight
<b>TBAEC2-10*-2 (4)</b>	1.5 - 10.0 Nm (13.28 - 88.51 lbf in)	20 - 700 rpm	1/4" square	487 x 72 x 94 mm (19.17 x 2.83 x 3.70 in)	1.43 kg (3.15 lbs)
<b>TBAEC2-12*-3</b>	2.0 - 12.0 Nm (17.70 - 106.21 lbf in)	20 - 520 rpm	3/8" square	463 x 72 x 94 mm (18.23 x 2.83 x 3.70 in)	1.45 kg (3.20 lbs)
<b>TBAEC2-20*-3</b>	5.0 - 20.0 Nm (44.25 - 177.01 lbf in)	16 - 370 rpm	3/8" square	452 x 72 x 94 mm (17.80 x 2.83 x 3.70 in)	1.45 kg (3.20 lbs)
<b>TBAEC2-30*-3</b>	10.0 - 30.0 Nm (88.51 - 265.52 lbf in)	10 - 240 rpm	3/8" square	530 x 72 x 94 mm (20.87 x 2.83 x 3.70 in)	2.25 kg (4.96 lbs)
<b>TBAEC2-55*-3 (5)</b>	20.0 - 55.0 Nm (177.01 - 486.79 lbf in)	6 - 130 rpm	3/8" square	586 x 72 x 94 mm (23.07 x 2.83 x 3.70 in)	2.67 kg (5.89 lbs)
<b>TBAEC2-85*-5</b>	30.0 - 85.0 Nm (265.52 - 752.31 lbf in)	3 - 80 rpm	1/2" square	630 x 72 x 94 mm (24.80 x 2.83 x 3.70 in)	3.00 kg (6.61 lbs)
<b>TBAEC2*-120-5</b>	35.0 - 120.0 Nm (309.78 - 1062.09 lbf in)	2 - 60 rpm	1/2" square	647 x 72 x 94 mm (25.47 x 2.83 x 3.70 in)	3.40 kg (7.50 lbs)

\*W = Wi-Fi option

\*B = Barcode reader option

\*WB = Wi-Fi & barcode reader option

2 = 1/4" square

3 = 3/8" square

4 = 1/4" hex E

5 = 1/2" square

Above 60 Nm, the tool must be operated with a suitable torque reaction arm!  
Safety feature: From TBAx-30 second start trigger available.

Dimensions and weight indications without battery.

Angle heads for the TorqBee® series  
can be found starting on page 32.



# TotqBee® EC<sup>2</sup>-Series

## Straight Tool



Straight Tool	Torque	Speed (neutral)	Tool adapter	Dimensions L × W × H	Weight
<b>TBSEC2-10*</b>	0.8 - 11.0 Nm (7.08 - 97.36 lbf in)	20 - 740 rpm	1/4" - Form E	410 × 72 × 94 mm (16.14 × 2.83 × 3.70 in)	1.22 kg (2.69 lbs)
<b>TBSEC2-12*</b>	1.0 - 14.0 Nm (8.85 - 123.91 lbf in)	20 - 530 rpm	1/4" - Form E	410 × 72 × 94 mm (16.14 × 2.83 × 3.70 in)	1.22 kg (2.69 lbs)

\*W = Wi-Fi option

\*B = Barcode reader option

\*WB = Wi-Fi & barcode reader option

Dimensions and weight indications without battery.

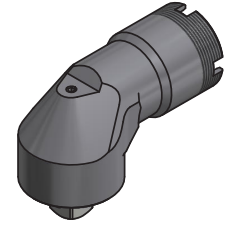
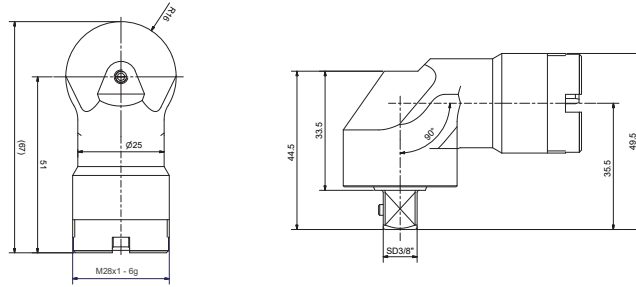
# TotqBee® Angle heads

for Shut-Off-Tools

## Angle head 030000267

- TBAL-12/20
- TBASO-12/20
- TBASOP-12/20
- TBAECO-12/20

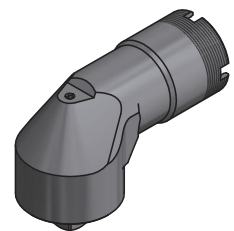
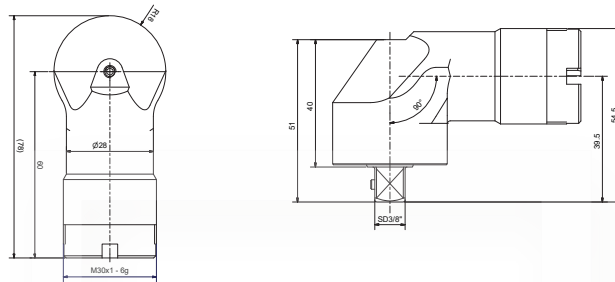
Max. torque: 20 Nm  
Output: 3/8" square  
Weight: 234 g



## Angle head 03000268

- TBAL-30
- TBASO-30
- TBASOP-30
- TBAECO-30

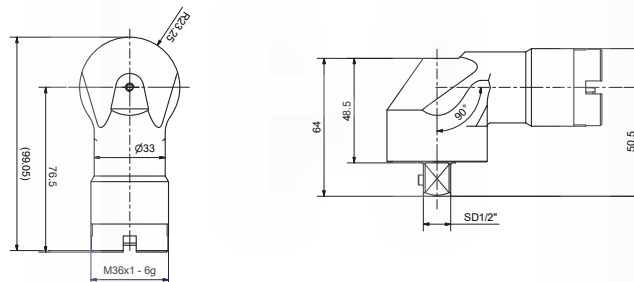
Max. torque: 30 Nm  
Output: 3/8" square  
Weight: 338 g



## Angle head 030000269

- TBAL-55
- TBASO-55
- TBASOP-55
- TBAECO-55

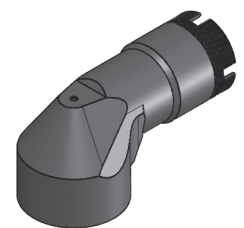
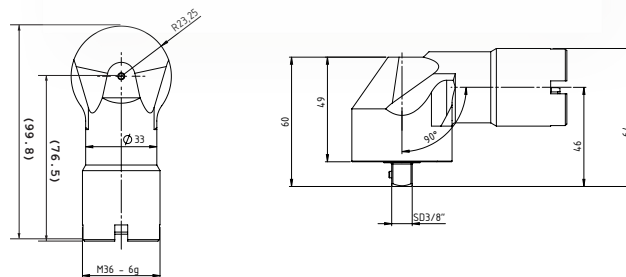
Max. torque: 55 Nm  
Output: 1/2" square  
Weight: 651 g



## Angle head 030000339

- TBAL-55
- TBASO-55
- TBASOP-55
- TBAECO-55

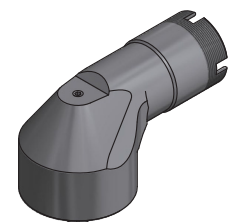
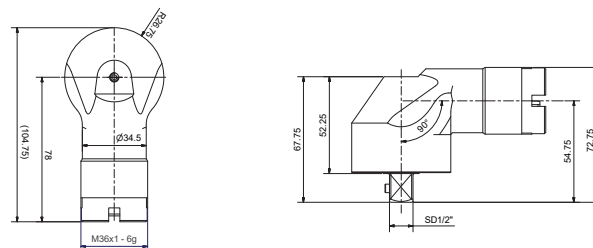
Max. torque: 55 Nm  
Output: 3/8" square  
Weight: 651 g



## Angle head 030000270

- TBAL-85
- TBASO-85
- TBASOP-85
- TBAECO-85

Max. torque: 85 Nm  
Output: 1/2" square  
Weight: 818 g



Further technical data incl. drive tool on request.

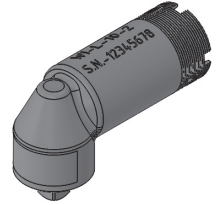
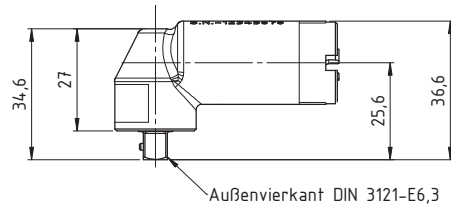
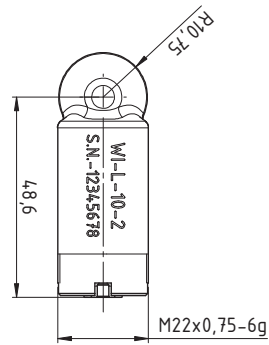
# TotqBee® Angle heads

for Shut-Off- and DC-Tools

## Angle head WI-L-10-2

- TBAL-10
- TBASO-10
- TBASOP-10
- TBAECO-10
- TBAEC-10
- TBAEC2-10

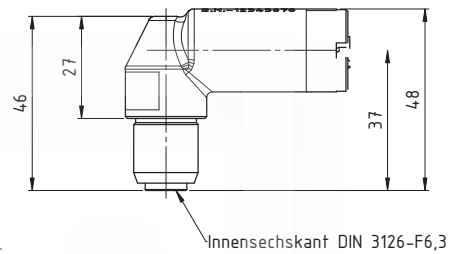
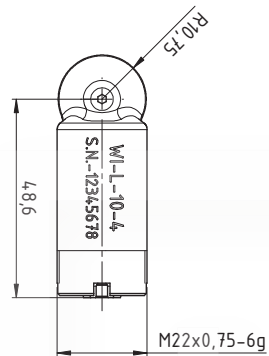
Max. torque: 10 Nm  
 Output: 1/4" square  
 Weight: 116 g



## Angle head WI-L-10-4

- TBAL-10
- TBASO-10
- TBASOP-10
- TBAECO-10
- TBAEC-10
- TBAEC2-10

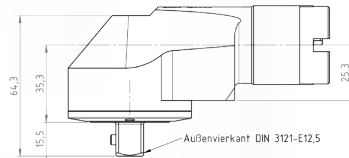
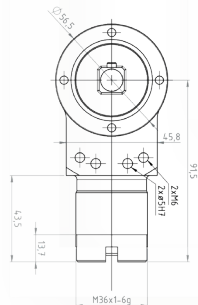
Max. torque: 10 Nm  
 Output: 1/4" hexagon Form E  
 Weight: 138 g



## Angle head WI-L-120-1/2

- TBAL-100
- TBASO-100
- TBASOP-100
- TBAECO-120
- TBAEC-120
- TBAEC2-120

Max. torque: 120 Nm  
 Output: 1/2" square  
 Weight: 170 g



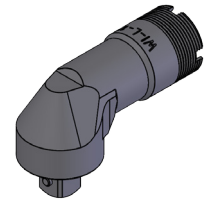
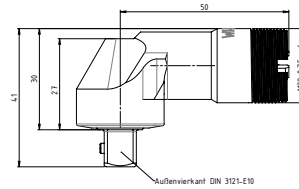
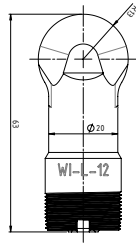
# TotqBee® Angle heads

for DC-Tools

## Angle head WI-L-12-3/8

- TBAEC-12
- TBAEC2-12

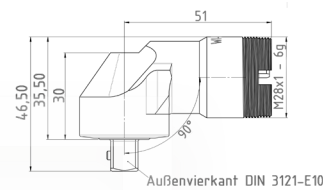
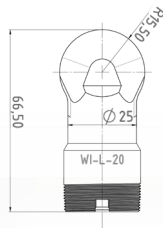
Max. torque: 12 Nm  
Output: 3/8" square  
Length: 140 mm  
Weight: 145 g



## Angle head WI-L-20-3/8

- TBAEC-20
- TBAEC2-20

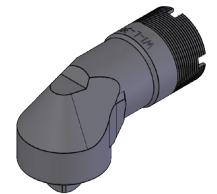
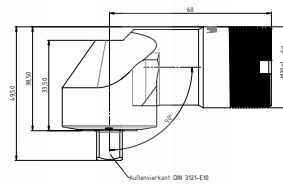
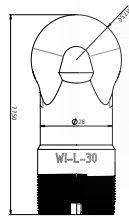
Max. torque: 20 Nm  
Output: 3/8" square  
Length: 130 mm  
Weight: 237 g



## Angle head WI-L-30-3/8 (WI-L-30-1/2)

- TBAEC-30
- TBAEC2-30

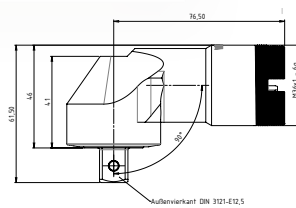
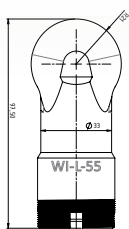
Max. torque: 30 Nm  
Output: 3/8" square (1/2" square)  
Length: 230 mm  
Weight: 330 g (3/8), 339 g (1/2)



## Angle head WI-L-55-3/8 (WI-L-55-1/2)

- TBAEC-55
- TBAEC2-55

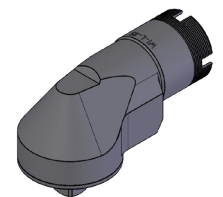
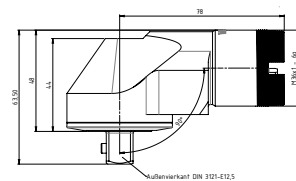
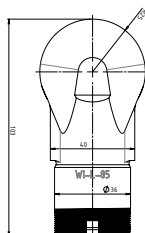
Max. torque: 55 Nm  
Output: 3/8" square (1/2" square)  
Length: 289 mm  
Weight: 579 g (3/8), 585 g (1/2)



## Angle head WI-L-85

- TBAEC-85
- TBAEC2-85

Max. torque: 85 Nm  
Output: 1/2" square  
Length: 333 mm  
Weight: 715 g



# TorqBee® Accessories

## Color index, easy assignment of the machine

HST-TB-GEH-RING-blue/yellow/red/silver



## TorqBee® EC/EC2 screwdriver adapter on carbon torque reaction arm

HST-3581



## Protective cover for TorqueBee pistol tool

TB-P-Cover

030000314 (20 = 12/12 Nm angle head)

030000315 (30 = 30 Nm angle head)

030000316 (55 = 55 Nm angle head)

030000317 (10 = 10 Nm angle head)

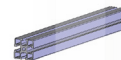


## Tool holder THS series

for riveters, straight/angle/pistol screwdrivers



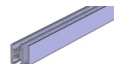
1



2



3



4

Order no.	Ref.	Description
HST-THS	1	Tool holder set consisting of 2 pieces
HST-TH-RAIL	2	Rail 45 × 45, length 500 mm
HST-TH-STAND	3	Stand for rail, height 1,000 mm
HST-TH-PROFIL	4	Profile for material boxes

## Torque Adjust

Adjustment tool

Torque-Adjust 030000243



## Universal tool holder

HST-THS

Tool holder set, for 8 mm aluminum profiles, 42-70 mm Set consisting of 2 brackets



## Tool holder for pistol screwdriver

030000377

Easily installed in the workplace

Adjustable incline for ergonomic working

Increased safety and organisation in the workplace



# TotqBee® Accessories

## Hanging mount

Order no.	Suitable for TBA-	Suitable for TBS-
TBAL-10		TBSL-4
TBAL-12		TBSL-6
TBAL-20		TBSL-10
TBAL-30		TBSL-12
TBAL-55		
TBAL-85		
TBAL-100		
<hr/>		
TBASO-10-*		TBSSO-4-*
TBASO-12-*		TBSSO-6-*
TBASO-20-*		TBSSO-10-*
TBASO-30-*		TBSSO-12-*
TBASO-55-*		
TBASO-85-*		
TBASO-100-*		
<hr/>		
TBASOP-10-*		TBSSOP-4-*
TBASOP-12-*		TBSSOP-6-*
TBASOP-20-*		TBSSOP-10-*
TBASOP-30-*		TBSSOP-12-*
TBASOP-55-*		
TBASOP-85-*		
TBASOP-100-*		
<hr/>		
TBAEC-10-*		TBSEC-6-*
TBAEC-12-*		TBSEC-10-*
TBAEC-20-*		TBSEC-12-*
TBAEC-30-*		
TBAEC-55-*		
TBAEC-85-*		
TBAEC-120-*		
<hr/>		
TBAEC2-10-*		TBSEC2-6-*
TBAEC2-12-*		TBSEC2-10-*
TBAEC2-20-*		TBSEC2-12-*
TBAEC2-30-*		
TBAEC2-55-*		
TBAEC2-85-*		
TBAEC2-120-*		

HST-3618

Order no.	Suitable for TBAEC-
	TBAEC-30-*
HST-3580	TBAEC-55-*
	TBAEC-85-*



HST-3618

HST-3580



Rotating hanging mount for TBA/S screwdriver

Rotating hanging mount for TBAEC30/55/85 screwdriver



TBP hanging mount  
PRIV-B8



TBS hanging mount  
HST-3624

\*W = Wi-Fi option  
 \*B = Barcode reader option  
 \*WB = Wi-Fi & barcode reader option



### Battery

Order no.	HST-PR-1825	HST-PR-1850
Voltage	18 V	18 V
Capacity	2.5 Ah	5.0 Ah
Compatible with	TorqBee-Series, NutBee-Series, RivBee-Series and more	
Weight	350 g	600 g



HST-PR-1825

HST-PR-1850

### Battery cover

Order no.	Suitable for battery
Cover-1825	HST-PR-1825
Cover-1850	HST-PR-1850



Cover-1825

Cover-1850

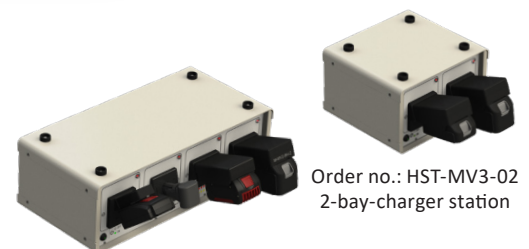
### HST-PR-2830 (Single charger)

Order no.	HST-PR-2830 / HST-PR-2830-USA
Input	220 - 240 V AC, 50 - 60 Hz / 110 V AC, 50 - 60 Hz
Charging current	3 A
Output	max. 21 V
Charging time	max. 55 min with 2.5 Ah battery
Shut-off criteria	ΔU, temperature shut-off
Weight	approx. 550 g
Dimensions W × H × D	approx. 85 × 110 × 155 mm



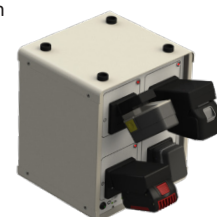
### HST-MV3 (Multi-bay-charger)

Order-No.	HST-MV3-02 / HST-MV3-04 / HST-MV3-04W	
Input	85 - 260 V AC, 47 - 63 Hz	
Power output	max. 624 W	
Efficiency	> 89 %	
Output	56 V / 624 VA	
Power supply ventilator	≤ 45°C (OFF) ≥ 50°C (ON)	
Weight	HST-MV3-02	ca. 4.7 kg
	HST-MV3-04	ca. 7.6 kg (Row)
	HST-MV3-04W	ca. 7.6 kg (Cube)
Dimensions W × H × D without battery adapter, incl. feet	HST-MV3-02	289 × 182 × 260 mm
	HST-MV3-04	539 × 182 × 260 mm
	HST-MV3-04W	289 × 330 × 260 mm
Tested	CE, EN55022B, EN61000-3-2,-3, EN61000-4-2, 3, 4, 5, 6, 8, 11 EN60950	



Order no.: HST-MV3-02  
2-bay-charger station

Order no.: HST-MV3-04  
4-bay-charger station  
row form



Order no.: HST-MV3-04W  
4-bay-charger station  
cube form

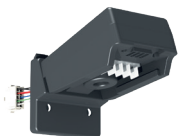
# Accessories

## HST-MV3 battery adapter

The specifications of the battery cell manufacturers and the specifications of the battery pack from each manufacturer are taken into account in the charging process.

Order no.	For battery types	
M-MV3-PR	HS-Technik HST-PR	14.4 & 18 V Li-Ion
M-MV3-BH	Makita Makstar (BL)	14.4 & 18 V Li-Ion
	Makita Makstar (BH)	9.6 - 24 V Ni-MH
	HST-BL	14.4 & 18 V Li-Ion
	HST-BH	9.6 - 24 V Ni-MH
M-MV3-BO-LI	Bosch	14.4 & 18 V Li-Ion
M-MV3-BO-10	Bosch	10.8 V Li-Ion
M-MV3-BO-NI	Bosch	7.2 - 18 V Ni-Cd & Ni-MH
M-MV3-FEIN	Fein ASM / ASW	10.8 / 14.4 / 18 V Li-Ion
M-MV3-CPN	Atlas Copco	18 & 36 V Li-Ion (before 2021 3-pole batteries)
	Desoutter	18 & 36 V Li-Ion (before 2021 3-pole batteries)
M-MV3-Cleco	Apex Cleco Power Tools	26 & 44 V Li-Ion
M-MV3-AC30	Atlas Copco	18 & 30 V Li-Ion
M-MV3-UNI	Makita	7.2 - 24 V Ni-Cd & Ni-MH
	Bosch	7.2 - 18 V Ni-Cd & Ni-MH
	Gesipa	12 V Ni-Cd & Ni-MH
	Gesipa	14.4 V Li-Ion
M-MV3-GE	Gesipa	18 V Li-Ion
M-MV3-PA-36	Panasonic	3.6 V Li-Ion
M-MV3-PA-LI	Panasonic	10.8 / 14.4 / 18 V Li-Ion
M-MV3-PA-72	Panasonic	7.2 V Li-Ion
M-MV3-IR	Ingersoll Rand	20 & 40 V Li-Ion
M-MV3-SCS	SCS	3.6 V
M-MV3-DES	Desoutter	18 & 36 V Li-Ion (since 2021 with electronic)

Example pictures:



M-MV3-PR



M-MV3-BH



M-MV3-BO-LI



M-MV3-BO-10



M-MV3-FEIN



M-MV3-CPN



M-MV3-UNI



M-MV3-PA-LI



M-MV3-PA-36

If you require battery adapters for older charging stations, please contact us.  
Additional battery adapters upon request.





**HERMESTOOLS Sp. z o.o.**  
ul. Sarni Stok 73 a, 43-300 Bielsko-Biała, Polska; tel: +48 33 821 41 90-91  
[www.hermestools.eu](http://www.hermestools.eu)

19012022



**HS-Technik GmbH**  
High - System - Technik

Im Martelacker 12  
D-79588 Efringen-Kirchen  
Phone: +49 (0) 76 28 - 91 11-0  
Fax: +49 (0) 76 28 - 91 11-90  
E-mail: [info@hs-technik.com](mailto:info@hs-technik.com)  
Internet: [www.hs-technik.com](http://www.hs-technik.com)

© Copyright January 2022

Subject to modifications and errors. All figures are non-binding.

We reserve the right to make technical changes to our products and the range of products as a result of further development.

Reproduction and the use of texts, even excerpts of our brochures is prohibited and will be prosecuted.